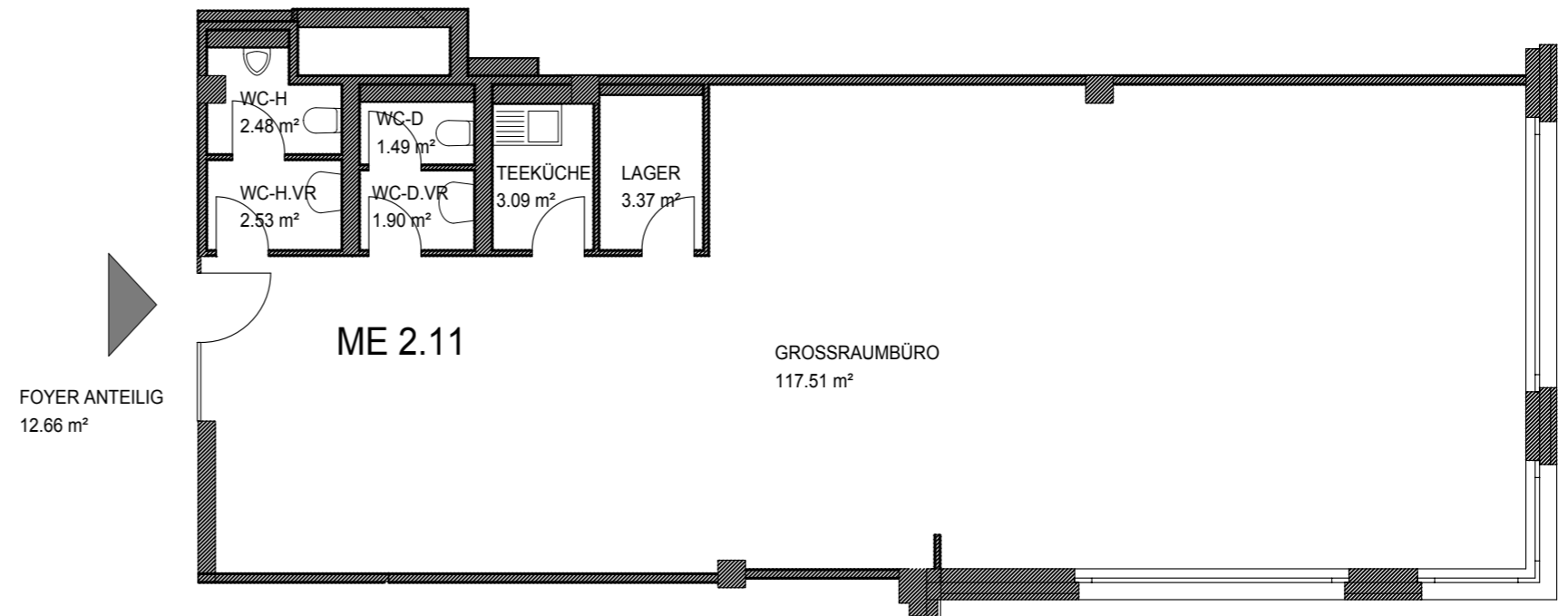
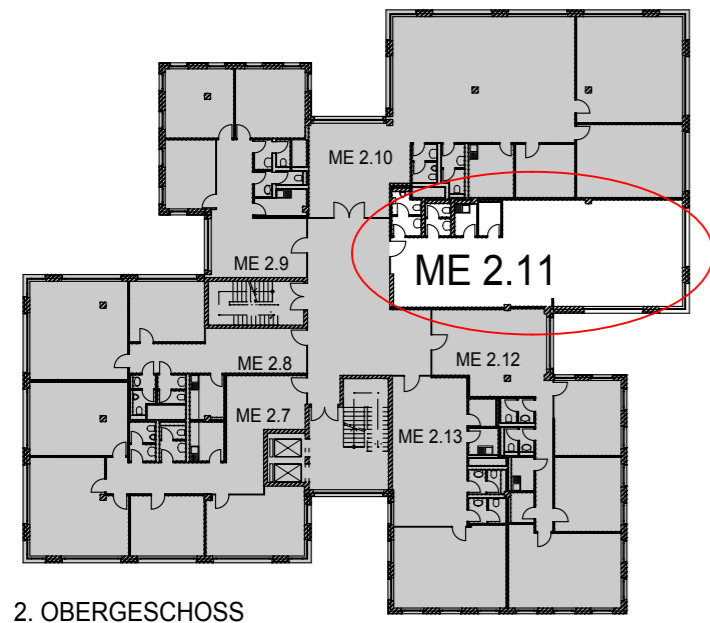


# four site

BAHNHOFSTRASSE 17  
82 327 TUTZING



## MIETEINHEIT 2.11

FOYER ANTEILIG	12,665
GROSSRAUMBÜRO	117,511
LAGER	3,371
TEEKÜCHE	3,089
WC-D	1,491
WC-D.VR	1,899
WC-H	2,479
WC-H.VR	2,527
<b>VERMIETUNG NACH GIF</b>	<b>146,61 m²</b>

M 1 / 100

**DRAGO**  
IMMOBILIEN GmbH